

Welcome Note

A warm welcome to all our new residents and their family members, we are delighted to have you all join the CHT family.

We have had an interesting year thus far with COVID-19 presenting us with a challenging start.

It was a real privilege to be involved in caring for your loved ones and being entrusted with their care. Thank you all for the support and care that you have shown throughout this time.

Easter Activities Dorothy



Activities and Celebrations

We continued to have our usual celebrations through lock down, with Easter—arts and crafts kept our residents occupied.

Even the Easter bunny came out to deliver the Easter eggs.

Music continued throughout with our in-house musician and Friday afternoon sing-a-longs.

The residents and staff joined for the Anzac commemoration.

Winter Festivities has now paved the way for the inaugural Amberlea Winter Olympics with 3 teams—Rotovegas, Wellywood and City of Sails all vying for the gold!

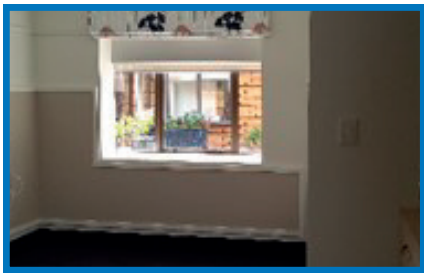
The Bored Board—A new addition, created by our activity coordinators, is a large display board that has pockets filled with activities.

It is placed in the reading nook outside Kawau Bay wing; the residents are able to enjoy some self-directed activity and access these at anytime during the day.

Anzac Service Richard



Our newly re-furbished room



Improvements and Initiatives

We have now been able to resume the renovations to our Brick Bay and Scandretts wings. This is due to be completed by the end of August / beginning of September.

It is nice for the residents to be able to enjoy their newly re-furnished rooms.

Dementia Unit Development

CHT Amberlea is about to go into the development phase of a new Dementia Unit. This is a wonderful example of CHT's commitment to meeting the changing needs of the population. There is a shortage of dementia care facilities in the local area which provides us with an opportunity to cater to the wider community, while also offering continuity of care for existing residents within our facility across rest home, hospital and dementia levels of care. Our new secure unit will provide an environment that will be conducive to the needs of this group of residents, with newly refurbished indoor and outdoor areas. The bedrooms, lounge and dining areas will be refurbished, while secured doors and fencing, decking areas and secure tinted glass will also be installed.

Staff News

I would like to extend a warm congratulations to Ellery Padolina, she was appointed our new Clinical Coordinator just prior to lockdown in March. She was previously working as one of our Registered Nurses and has the skills and expertise that fit this role very well. If you have not already met with Ellery please take your time to introduce yourself when passing.

Whilst it feels that I have only recently join here at Amberlea I am sad to say that I will be moving on at the end of September. It has been an enjoyable time getting to know the Amberlea family and I am filled with pride with all the hard work that the team here do everyday.

I can truly say that your family members are cared for with warmth and compassion and I would like to thank all the families and friends for the kindness and support you extend to our team here.

Best Wishes
Unit Manager,
Jodi Botting
Jodi.Botting@cht.co.nz